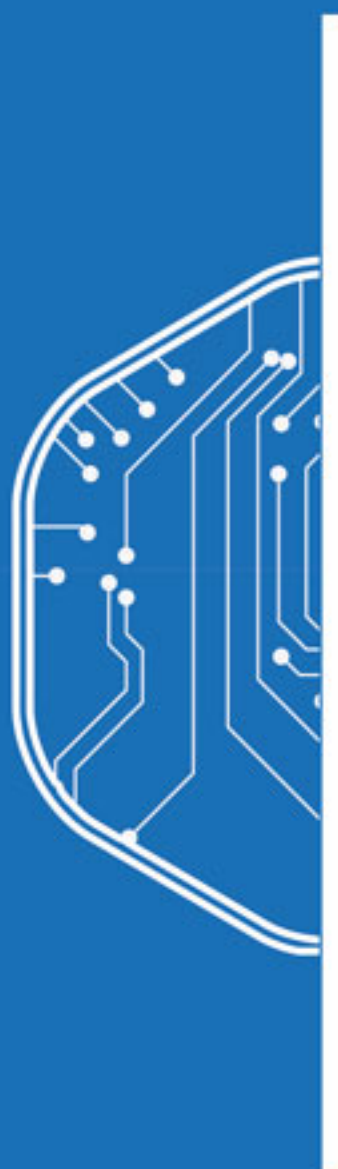


All Weather OLED Alarm Keypad



Available with different technologies:

- 125kHz Prox
- 13.56kHz Mifare, Desfire, Legic



Number pads use the latest Touch Sensor technology, with individual key backlighting



Can display a 21 character customized scrolling message



Card reader function supported



Multiple languages supported



Tamper protection



Quick access keys for intuitive command inputs



Front plate customisation and backlit design is available



Design with End User Logo is available



Alarm buzzer built-in

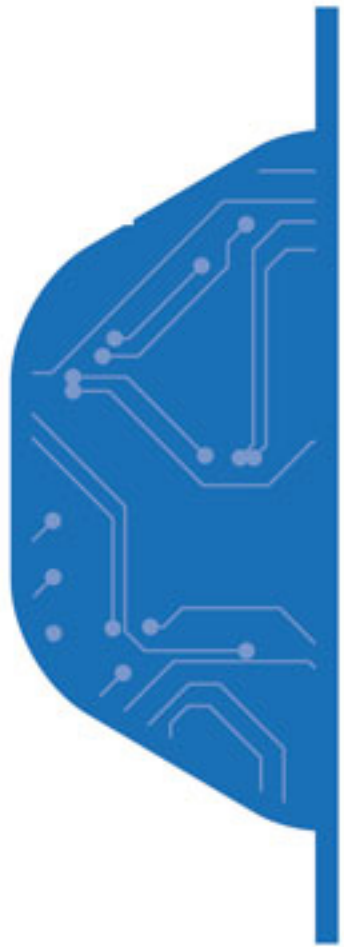


Configuration menu options for baud rate, device address and encryption key



Status LED indicators

Friendly Installation



Touch pad has no moving parts, for greater durability



All inputs have overvoltage protection



All input and output signals are protected against static charges



Non-drop bottom screw for easy servicing



Stainless steel security screw is an option



Universal back plate allows reader installation on different sizes of gang box.



Reverse power protection



All weather-proof design with IP65 certificate



Plastic mounting plate allows the reader to be installed on any surface without affecting read range

Technical Specifications

Typical Read Range	3-8 cm (Base on Different Technology)
Reader Standard Output	RS485
Display Message	S1000 driver
Wiring Distance	RS485 - 1200m (22 AWG with Shielded Cable)
Operating Voltage	10 - 15VDC
Operating Current	150mA (max)
Operating Temperature	-10°C to +70°C
Exterior Dimension	115.5 x 84.5 x 20.5mm
Case Material	PC + ABS
Standard Colour	Black (optional White, contact SPG)
Operating Humidity	10% - 90%
Weight	210g



Ordering Information

SD1-TKD-B	Alarm Touch Keypad Black with No Reader
SD1-TKD-MFR-B	Alarm Touch Keypad Black with Mifare
SD1-TKD-MFRIC-B	Alarm Touch Keypad Black with Mifare and Iclass
SD1-TKD-MFRICP-B	Alarm Touch Keypad Black with Prox Mifare and Iclass
SD1-TKD-PRX-B	Alarm Touch Keypad Black with Prox Reader